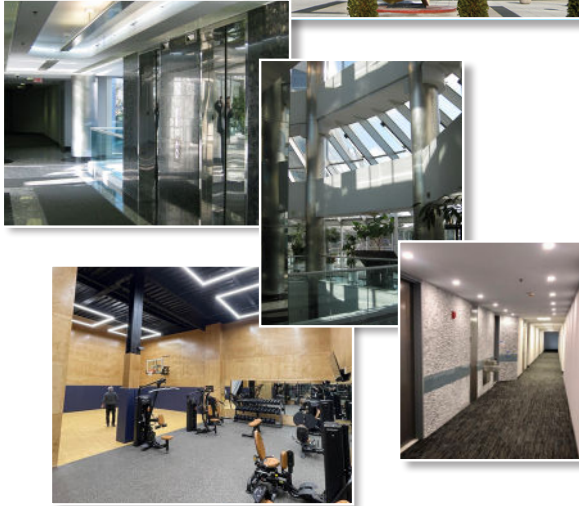


PRIME OFFICE SPACE FOR LEASE

• 1400 old country road • westbury, new york



LOCATION

- westbury, new york 11590
- central nassau submarket

SPACE AVAILABLE

IMMEDIATE OCCUPANCY

- | | | | | |
|----------------------|--|--------------|--|--------|
| • 2,692 square feet | | fourth floor | | N-407 |
| • 9,881 square feet* | | third floor | | sublet |
| • 1,391 square feet | | second floor | | N-206 |
| • 1,200 square feet | | concourse | | C-104N |

*up to 20,839 square feet can be made available

Multi-Million Dollar Renovation Completed

• 4 story building • 250,000 square feet •

COMMENTS:

- Conveniently located off the Wantagh Parkway, Old Country Road exit ramp
- NICE bus stop at corner
- 4:1000 parking ratio with covered parking deck
- 24 / 7 building access
- Fitness center recently updated & renovated
- Café with seating for 50, serving hot & cold foods
- Conference rooms available for tenants use

FOR INFORMATION CONTACT:

ROGER W. WOOSTER

401 broad hollow road • suite L1
melville, new york 11747

main - 516.935.8300 direct - 516.441.7230

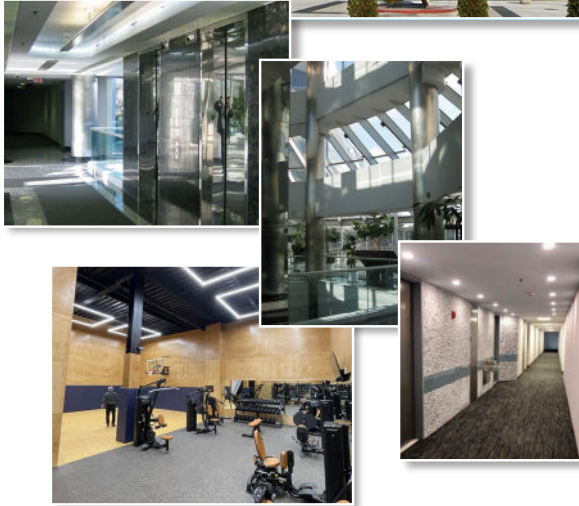
roger.wooster@therochlinorganization.com

www.therochlinorganization.com



PRIME OFFICE SPACE FOR LEASE

• 1400 old country road • westbury, new york



LOCATION

- westbury, new york 11590
- central nassau submarket

SPACE AVAILABLE

IMMEDIATE OCCUPANCY

- | | | | | |
|----------------------|--|--------------|--|--------|
| • 2,692 square feet | | fourth floor | | N-407 |
| • 9,881 square feet* | | third floor | | sublet |
| • 1,391 square feet | | second floor | | N-206 |
| • 1,200 square feet | | concourse | | C-104N |

*up to 20,839 square feet can be made available

Multi-Million Dollar Renovation Completed

• 4 story building • 250,000 square feet •

COMMENTS:

- Conveniently located off the Wantagh Parkway, Old Country Road exit ramp
- NICE bus stop at corner
- 4:1000 parking ratio with covered parking deck
- 24 / 7 building access
- Fitness center recently updated & renovated
- Café with seating for 50, serving hot & cold foods
- Conference rooms available for tenants use

FOR INFORMATION CONTACT:

ADAM E. ROCHLIN

401 broad hollow road • suite L1
melville, new york 11747

main - 516.935.8300 direct - 516.441.7373

adam.rochlin@therochlinorganization.com

www.therochlinorganization.com

